

11 PRESTIGIOUS NATIONAL ENGINEERING SCHOOLS

ENCOURAGING INNOVATION
TO BUILD A BETTER TOMORROW



THE TOP ENGINEERING CENTER IN FRANCE

With 6,000 students and 1,800 graduates a year, Lorraine INP is the top engineering center in France.

This college of Université de Lorraine offers 16 engineering degrees authorized by the CTI, 9 of which are accessible through sandwich learning or apprenticeships.

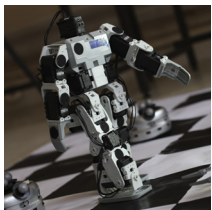
The engineering schools from Lorraine INP work to the major scientific, social, technological and economical challenges of tomorrow in a broad spectrum of disciplines.

They are backed by internationally renowned research laboratories and partnerships with hundreds of universities from all continents. With over 60 specializations between the schools, Lorraine INP covers all the sectors of science and technology.

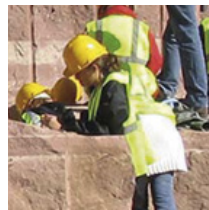
6,000
student engineers

1,800
engineering graduates a year

10
chairs of education and research



more than
36,000
employed graduates



- HEALTH
- NATURAL RESOURCES
- MATERIALS OF THE FUTURE
- RENEWABLE ENERGY
- DIGITAL SCIENCE
- ENERGY
- FOOD
- ENVIRONMENT

9

engineering degrees through apprenticeships and sandwich courses



25%
of graduates recruited internationally upon leaving school

16
engineering degrees from multi-disciplinary to specialized engineering

100%
of engineers integrate employment within 6 months

LORRAINE INP

Ranked **1st** in France for engineering ('Industries and Technologies' 2016)

Ranked **3rd** in France for engineering ('Usine Nouvelle' 2015)



TRAINING BASED ON RESEARCH



Lorraine INP engineering schools do not just provide knowledge. They house internationally-recognized research laboratories backed by renowned research organizations (such as CNRS-INRIA). These organizations contribute to the learning process and are directly involved in our training programs: guaranteeing that our students are trained to the most up-to-date scientific and technological standards. In parallel to

their engineering studies, students have the opportunity to train in the research sector by doing a Master's. 10% of our graduates choose to go on to do a PhD. Completing a PhD at the Université de Lorraine offers the opportunity to join the largest international groups in positions of great responsibility or to enter into the field of research either in France or abroad.

5 RESEARCH CENTERS

AGRONOMY,
FOOD BUSINESS,
BIOTECHNOLOGY

GEOSCIENCES

COMPUTER SCIENCE,
AUTOMATIC CONTROL,
ELECTRONICS AND
MATHEMATICS

MECHANICS, ENERGY,
PROCESS ENGINEERING,
INNOVATIVE CHEMISTRY

MATERIALS-METALLURGY

LORRAINE INP, MEETING THE NEEDS OF COMPANIES



Lorraine INP works to serve the socio-economic world anticipating technological innovations necessary for business development and training engineers in line with the skills needed in the working world.

The biggest French and international groups, as well as hundreds of SMEs, are partners of our schools and participate in our training strategies. They are by our side in the creation of our programs and fund our schools.

Our student engineers confront and develop their knowledge and skills through contact with the economic world throughout their studies through internships, lectures from visiting speakers, mentorships, company visits, professional forums, engineering projects for companies, end-of-study projects and much more.



11 NATIONAL ENGINEERING SCHOOLS



ENSAIA FOOD PRODUCTS ENGINEERING

Agronomy and Food Industry programs. Graduates are qualified to occupy high level technical and economic positions in Agronomy and Agro-Industries, Food Industries and Biotechnology, in Environment, and all other related activities.

www.ensaia.univ-lorraine.fr



ESSTIN TECHNOLOGICAL ENGINEERING

Materials, Mechanics, Environment, Energy, Service engineering, Telecommunication and Networks, Design, Safety and Quality.

www.esstin.univ-lorraine.fr



ENSTIB WOOD ENGINEERING

The only public engineering school in France to prepare executive personnel, engineers, researchers and to promote research studies and technology transfer for the wood and natural fibres industries.

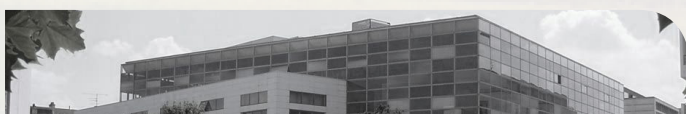
www.enstib.univ-lorraine.fr



MINES NANCY

Engineering school dedicated to Management and Art & Design. Mines Nancy is a partner of the institute Mines Telecom and a member of Artem Nancy.

www.mines-nancy.univ-lorraine.fr



EEIGM MATERIALS ENGINEERING

Design, eco-design, characterisation, behaviour and recycling of more and more complex materials. This school is a member of a consortium of 7 universities in France, Germany, Spain, Sweden, Poland and Russia.

www.eeigm.univ-lorraine.fr



TELECOM NANCY ENGINEERING IN INFORMATION TECHNOLOGY

Trains engineers in IT and Digital Science and Technologies. 4 specializations: Software Engineering, Business Information Systems, Telecommunications, Networks and Services, Embedded Software.

www.telecomnancy.univ-lorraine.fr



ENSGSI INDUSTRIAL ENGINEERING & INNOVATION

Sciences, Technology and Management. Focus: Innovation products/process/services. Assets: 5 double degrees with national and international institutions and an international accreditation unique in Europe in Management of Technology (MOT). Cooperation with a school of Management: the ICN Business School.

www.ensgsi.univ-lorraine.fr



ENSEM THE SCHOOL OF ENERGY

Solid training in Mechanical Engineering, Electrical engineering and Information Technology designed to meet the needs of various sectors such as Energy, Sustainable Development, State-of-the-art Technology, Automobile, Aeronautic Construction or IT.

www.ensem.univ-lorraine.fr



ENSIC CHEMICAL ENGINEERING

Fields of study: Engineering, Sciences, Energy Management, Environment, Chemistry, Sustainable Development, Pharmacy, Cosmetology, Bio technologies, Production Processes and Conception of products and high-value technological systems.

www.ensic.univ-lorraine.fr



ENSG GEO SCIENCES

France's leading Grande École in Geosciences. Thorough training in Physics and Chemistry of the Earth and its hydrological systems, complemented with courses in the fields of Mechanics, Information Technology, Law and Economics. A unique set of skills to carry out tasks and projects effectively!

www.ensg.univ-lorraine.fr



ENIM NATIONAL SCHOOL OF ENGINEERING IN METZ MECHANICS, AUTOMATED MANUFACTURING

Mechanics, automated manufacturing
Tailor-made training programs: choice between 4 programs, 10 specializations with close connections with the working world and international universities.

www.enim.fr